

**Registration
begins
Tuesday,
Jan. 20**



Event Highlights:

Winter Reading Wrap-Up Party
Baby STEAM Lab
Valentine's Day Walk-In Craft
The Great Library Heist Teen Lock-In
Decades Trivia Night

Program Guide for Children, Teens & Adults

DON'T MISS IT!



DIARY OF A WIMPY KID

Character Meet & Greet: Diary of a Wimpy Kid

**Mishawaka Library | Saturday, February 21
2:30–3:30 p.m. | Family & All Ages**

Cast members from South Bend Civic Theatre's production of Diary of a Wimpy Kid: The Musical will perform songs and choreographed numbers from the show, answer audience questions, lead a craft and be available for photos. Adult caregivers must remain in the room.

No registration required



MAR10 Day

**Mishawaka Library | Tuesday, March 10
5–6:30 p.m. | Family & All Ages**

Enjoy activities, games and crafts while celebrating everyone's favorite plumber! Adult caregivers must directly supervise participants 9 years of age and younger; caregivers must remain on the premises for participants 10-11 years of age.

No registration required



Lion King JR. Sneak Peek

**Mishawaka Library | Saturday, March 21
10–11 a.m. | Family & All Ages**

Join us for a sneak peek of Lion King JR. performed by the cast of The Main Stage, Inc. Adult caregivers must remain in the room.

No registration required



Program Guide Contents

Featured Events	2
Family and All Ages Programs	4
Children's Programs Part 1.....	5
Children's Programs Part 2.....	6
Storytime.....	7
1000 Books Before Kindergarten	8
Books Before... ..	9
Teen Programs Part 1	10
Teen Programs Part 2	11
Adult Programs Part 1.....	12
Adult Programs Part 2.....	13
Adult Programs Part 3.....	14
Library Card Information	15
Locations, Hours, & Social Media	16

Our Mission

The Mishawaka-Penn-Harris Public Library inspires and empowers our community by connecting patrons to literature, information, ideas and new experiences for lifelong enrichment.

Winter Reading Wrap-Up Party

Harris Branch

Thursday, February 26

4:30–6:30 p.m. | Family & All Ages

Once upon a time ... we had a wonderful Winter Reading Challenge! Don't forget to turn in your reading challenge card and celebrate with crafts, games and special character visits.

Adult caregivers must directly supervise participants 9 years of age and younger; caregivers must remain on the premises for participants 10-11 years of age.

No registration required



Virtual Food Tasting: Chocolate Challenge

Live on Zoom

Wednesday, March 11

6–6:45 p.m. | Family & All Ages

Can you taste the difference between European and American chocolate candies? Put your taste buds to the test with this fun challenge. Details on when and where to pick up program supplies will be sent via email to registrants. Limit one kit per household.

Registration required



Family Crafting: Library Bags

Harris Branch

Saturday, March 28

10:30–11:30 a.m. | Family & All Ages

Bring the whole family to design and decorate their own library bags! Supplies will be provided. Limit one bag per participant. Adult caregivers must remain in the room.

Registration required



Kids in the Kitchen

Mishawaka Library

Tuesday, Feb. 3

Monday, Feb. 9

Tuesday, Mar. 3

Monday, Mar. 9

4:30–5 p.m. | Grades K–2

**Gr.
K–2**

Enjoy an afternoon filled with learning new kitchen skills and recipes. The best part is that everyone gets to sample their creation! The same recipe will be repeated at the February and March sessions. Adult caregivers must remain in the library.

Registration is required and limited to MPHPL cardholders. Please register for one session.



Kids in the Kitchen

Mishawaka Library

Wednesday, Feb. 11

Thursday, Feb. 12

Wednesday, Mar. 4

Thursday, Mar. 12

4:30–5:15 p.m. | Grades 3–5

**Gr.
3–5**

Enjoy an afternoon filled with learning new kitchen skills and recipes. The best part is that everyone gets to sample their creation! The same recipe will be repeated at the February and March sessions. Adult caregivers must remain in the library.

Registration is required and limited to MPHPL cardholders. Please register for one session.

Groundhog Day Picture Bingo

Mishawaka Library

Monday, February 2

4:30–5:15 p.m. | Age 11 & Under

Celebrate everyone's favorite weather-predicting rodent with a few fun rounds of picture bingo! A variety of prizes will be available. Adult caregivers must remain in the room.

Registration required



Baby STEAM Lab

Mishawaka Library | Tuesday, February 10

Harris Branch | Wednesday, February 11

10:15–11 a.m. | Age 5 & Under

Tinkering toddlers are welcome to play and explore science, technology, engineering, art and math through fun hands-on activities. Adult caregivers must remain in the room.

No registration required



Valentine's Day Walk-In Craft

All Locations

**Friday, February 13
During Library Hours
Age 11 and Under**

Drop in to make something special for your favorite Valentine! A variety of crafts will be available.

No registration required





Homeschool Hangout

Mishawaka Library
Wednesdays: February 18
& March 18
1-1:45 p.m. | Grades K-5

Learn about new topics through hands-on activities. Supplies will be provided. Adult caregivers must remain in the library.

February 18: Wintry STEAM

March 18: National Parks

Registration required for each session

Art Explorers

Mishawaka Library
Thursday, February 19
4:30-5:30 p.m.
Grades K-2

Gr.
K-2

Mishawaka Library
Tuesday, February 24
4:30-5:30 p.m.
Grades 3-5

Gr.
3-5

Let your creativity fly while creating your own scribble art masterpiece! Adult caregivers must remain in the library.

Registration required



South Bend Civic Theatre Presents: Bluey's World

Mishawaka Library
Saturday, February 28
10:30-11:30 a.m. | Grades K-5

Get ready this winter for an immersive experience into the world of Bluey! Using games from renowned episodes, this class centers on imaginative play, problem solving, creativity and social-emotional intelligence.

Participants will create magical scenes and games by using everyday items to make whole worlds and characters. Join us "for real life" fun and adventure! Adult caregivers must remain in the library.

Registration required



National Crayon Day Celebration

Harris Branch | Tuesday, March 31
10:15-11 a.m. or 6-6:45 p.m.
Age 11 & Under

Enjoy a crayon-themed storytime and a colorful craft!

Registration required



Storytime

Storytime

Bouncin' Babies Birth–23 Months

A structured program that combines books, short rhymes, songs, fingerplays and movement activities to introduce children to the wonder of language.



Li'l Listeners Ages 2–5

A structured program in which books, story-related activities and crafts provide an enjoyable group experience.



Attend a Storytime | 10:15–10:45 a.m.

Mishawaka Library
Tuesdays
Mar. 3, 10, 17 & 24

Harris Branch
Wednesdays
Mar. 4, 11, 18 & 25

Bittersweet Branch*
Thursdays
Mar. 5, 12, 19 & 26

No registration required

Children must be accompanied by an adult caregiver.
Caregivers are expected to participate in activities as able. Groups may contact the Family & Outreach Services Coordinator at (574) 259-5277 ext. 1401 to inquire about special accommodations.

If both PHM and Mishawaka schools are delayed or canceled,
storytime will be canceled for that day. If only one school system closes,
please call the storytime location to verify that the event is still being held.

***Should the Bittersweet Branch be closed for construction,**
Thursday storytime sessions will be canceled.



MPHPL encourages families and caregivers to build closeness and early-literacy skills with their children by reading 1000 Books Before Kindergarten!

MILESTONE ACHIEVEMENTS

1000 Books Before Kindergarten® is a registered trademark of the 1000 Books Foundation

100 BOOKS

- Rei B.
- Wren B.
- Nora H.
- Ezio M.
- Clark N.
- Wesley V.
- Jack W.
- Josie W.
- Cash
- Nicolas

200 BOOKS

- Roman C.
- Hailey D.
- Hattie K.
- John L.
- Oliver L.
- Rose M.
- Celine W.

300 BOOKS

- Lily E.
- Nikolai H.
- Corbin P.
- Olivia S.
- Jameson
- John
- Paulina

400 BOOKS

- Jordan C.
- Mazen G.
- Josephine P.
- Carson V.
- Grant V.
- Penelope

500 BOOKS

- Violet C.
- Preston H.
- Cassiel S.
- Dean

600 BOOKS

- Theo B.
- Claire W.
- Grace W.
- Irene

700 BOOKS

- Rose O.
- Chloe
- Freyja
- Sammy

800 BOOKS

- Emmett A.
- Annie B.
- Lucy B.
- Lottie K.
- Evelyn S.

900 BOOKS

- Sadie C.
- Jacob L.
- Ellie P.
- Trevor P.

1000 BOOKS



Penelope



Lilliana



Sergio



Eden L.



To participate, visit a Youth Services desk or our website

mphpl.org/1000Books



Attention Parents, Caregivers and Teachers

- Let MPHPL help you find books that interest your children/students, whether for a school assignment or reading for pleasure.
- Select up to three topics per book bundle.
- MPHPL librarians will select your books!
- Books will be ready for pickup at the Circulation desk.

Reserve a Book Bundle today!
mphpl.org/book-bundles



Books Before... is a set of programs designed to grow with the reader. Encourage a lifetime of literacy with this fun milestone challenge!

MILESTONE ACHIEVEMENTS

200 BEFORE MIDDLE SCHOOL

25 BOOKS

- Daniel A.
- Eli A.
- Annabella B.
- Cayden B.
- Andrew C.
- Caitlyn M.
- Dev P.
- Shiv P.
- Annette S.
- Caleb S.
- Levi S.
- Rachel S.
- Luke S.
- Cam W.

50 BOOKS

- Tucker
- John R.

75 BOOKS

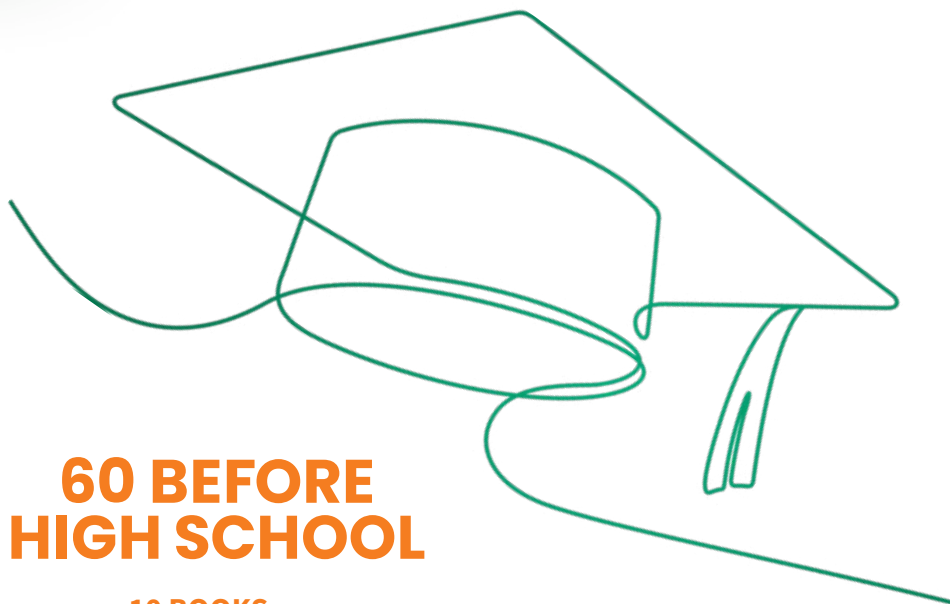
- Reece
- Holden H.
- Ivory

100 BOOKS

- Lincoln
- Zeke
- Marshall F.
- Lilly F.
- Kiaan N.

125 BOOKS

- Savaya



60 BEFORE HIGH SCHOOL

10 BOOKS

- Melody G.

20 BOOKS

- Leorah F.
- Tessa G.

50 BEFORE GRADUATION

200 BOOKS



Judah

60 BOOKS



Linnea

50 BOOKS



Mari



To participate in a challenge, visit a Youth Services desk or mphl.org/initiatives





TEEN GAMING

Teen Gaming

3:30–5:30 p.m. | Grades 6–12

Mishawaka Library

Tuesdays: February & March
(no session 3/10)

Play our Nintendo Switch™ or choose from an assortment of card, dice and board games.

Play for a few minutes or join us for the full two hours.

No registration required

Flavor Feud: Popcorn Edition

Harris Branch

Tuesday, February 17

5–5:45 p.m. | Grades 6–12

Do your taste buds have what it takes to take on our popcorn challenge? The participant who identifies the most flavors will win a special reward!

Registration required

Teens in the Kitchen

Mishawaka Library

Thursday, February 5

or Harris Branch

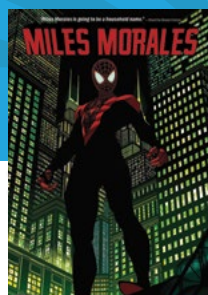
Thursday, March 5

5–5:45 p.m. | Grades 6–12

Learn new kitchen skills and recipes, then sample your delicious creations. Teens must have a signed permission slip on file (or an adult caregiver must sign one on-site).

Registration is required and limited to MPHPL cardholders. Please register for either the February or March session.

There is more to explore on
hoopla



Visit mphpl.org/digital
to get started today!

**NEW TITLES
ALWAYS BEING
ADDED!**

Homeschool HANGOUT

Homeschool Hangout

Mishawaka Library

**Wednesdays: February 18
& March 18**

1-1:45 p.m. | Grades 6-12

Learn about new topics through hands-on activities.
Supplies will be provided.

February 18: STEAM

March 18: National Parks

Registration required for each session

Popcorn & Painting

Harris Branch

Monday, March 30

5-5:45 p.m. | Grades 6-12

Create your own personalized keyhole design
on canvas during a fun afternoon of art,
popcorn and friends!

Registration required



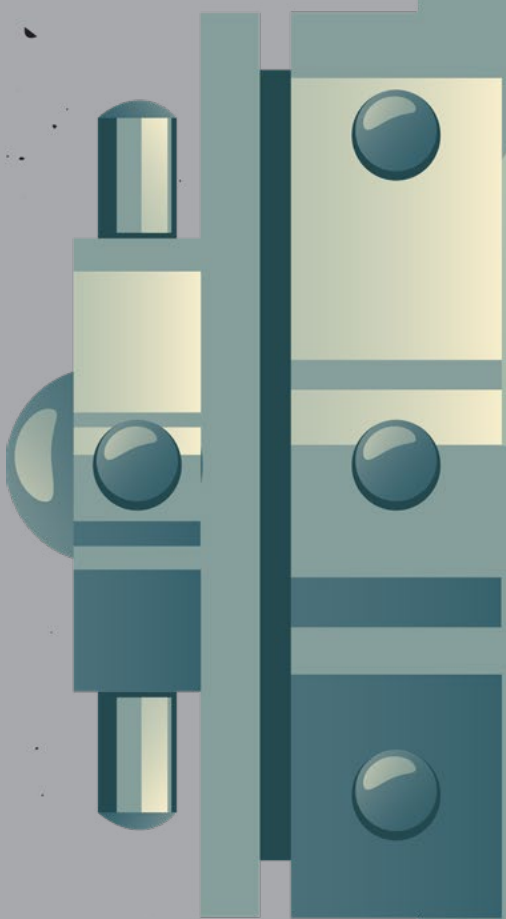
The Great Library Heist Teen Lock-In

**Mishawaka Library | Friday, February 27
5:30-7:30 p.m. | Grades 6-12**

Breaking News: The library needs your help!
Find the stolen goods, catch the burglar and do it all
before the Director knows anything is missing.
Pizza and drinks will be served.

Teens must have a signed permission slip on file
(or an adult caregiver must sign one on-site).
No admittance after 5:45 p.m.

Registration required

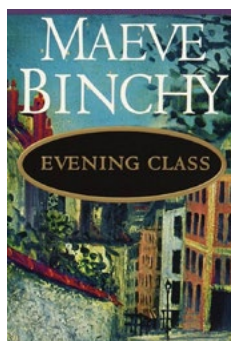


Saturday-Morning Book Club

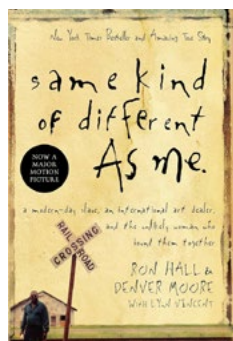
Mishawaka Library
Saturdays: February 7
& March 7

10:15-11:15 a.m. | Adults (18+)

Join us to discuss this month's book selection. Books are available a month in advance at the front desk of the downtown Mishawaka Library on a first-come, first-served basis.



February 7
Evening Class
 by Maeve Binchy



March 7
Same Kind of Different As Me
 by Ron Hall

Registration required for each session

Sewing and Soup

Mishawaka Library
Friday, February 20
10:30-11:30 a.m. | Adults (18+)

Learn to make a cozy for your winter bowl of soup, perfect for microwaving something warm and nourishing. All materials will be provided. No experience necessary.

Registration required



American Heritage Spotlight

Mishawaka Library
2nd Tuesdays:
February 10 & March 10
5:30-6:30 p.m. | Adults (18+)



February 10
Indiana, Michigan and the Line Between Them

Aaron Helman, author of *The Turtle*, *The Mitten* and *An Epic History of Michigan*, will share stories about Michigan's disputed borders, including the Toledo War – the deal that moved South Bend and Mishawaka into Indiana, a dispute that remains today.

No registration required



March 10
"Mad Anthony" Wayne and the Revolution

Matthew Baumgartner, local historian, will present on Anthony Wayne of Pennsylvania, one of the fiercest of Washington's fighting generals and a key influence on the formation of an American way of war.

No registration required





A Matter of Balance: Managing Concerns about Falls

Mishawaka Library

**Mondays: February 23–April 13
10 a.m.–Noon | Adults (60+)**

Using practical strategies to manage falls and improve activity levels, join REAL Services for an 8-week program designed to help adults age 60+ increase balance and strength. Includes some light exercise.

Registration required

Cooking Classics: Jalapeño Popper Breadsticks


Mishawaka Library

**Mondays: February 23
or March 23**

4:30–5:30 p.m. | Adults (18+)

Try your hand at easy culinary creations as we experiment with different flavors and make irresistibly delicious goodies!

Registration is required and limited to MPHPL cardholders. Please register for either the February or March session.



**Pies for Pi Day
Mishawaka Library
Saturday, March 14
11 a.m.–Noon | Adults (18+)**

Don't be irrational. Celebrate Pi Day by making your own personal pie.

Registration is required and limited to MPHPL cardholders.

Decades Trivia Night

**Mishawaka Library | Friday, March 6
6:30–8:30 p.m. | Adults (18+)**

Test your knowledge on a variety of popular topics from every decade since the 1960s! We will also collect donations of non-perishable food items for the Mishawaka Food Pantry. Participants who donate will be entered for a chance to win a small prize. Teams must have 2-6 members.

Registration required and limited to 16 teams



Navigating Community-Based Aging Resources

Mishawaka Library

Tuesday, March 17

3:30–4:45 p.m. | Adults (18+)

Aging Connections of Michiana will present

“I Want to Stay in My Home as Long as Possible...How Can I Age-in-Place?”

Whether you're planning for yourself or helping a loved one, you'll walk away with knowledge, resources and confidence. Recommended for seniors and caregivers.

No registration required



Paint with Us!

Harris Branch

Friday, March 20

10:30–11:30 a.m. | Adults (18+)

Embrace your artistic side as we use paint and hot glue on glass to create a faux stained-glass creation. Use one of our templates or create your own design.

Registration required



BINGO

Bittersweet Branch

Wednesday, March 25

5:30–6:30 p.m. | Adults (18+)

Enjoy an evening of bingo and beverages! Winners will receive small prizes and raffle tickets for a chance to win a door prize.

Should the Bittersweet Branch be closed for construction, this program will be moved to the Mishawaka Library.

Registration required



The Smartest Card In Your Wallet



What do I need for a LIBRARY CARD?

To obtain your library card, you must:

1.



Live in Penn or Harris townships or have a home library card from a library system that is reciprocal with MPHPL

2.



Provide required documentation

3.



Sign for card
(parent/legal guardian required for applicants under age 18)

Not a resident? Have more questions? Visit mphpl.org/card

What can I CHECK OUT?

Lending Limit

Loan Period (Days)

Books & Audiobooks

No Limit

21

Magazines & Music CDs

No Limit

21

New-Release DVDs

3

7

Entertainment DVDs

20

7

Non-Fiction DVDs & TV Series

20

21

Daily Late Fees: New-Release DVDs, \$1; everything else, 25¢

Get Reminders ...

- Before materials are due
- Thru email, phone or text



Items Renew Automatically ...

- If no one is waiting for them
- Up to 3 renewals (3 months)

Place a Hold ...

- To reserve the materials you want
- By phone or online



Check out our digital resources & Discovery Passes!



Mishawaka Library

209 Lincolnway East
Mishawaka, IN 46544
(574) 259-5277

Circulation Desk ext. 1200
Reference Services ext. 1300
Youth Services ext. 1400

Monday	9 a.m. - 7 p.m.
Tuesday	9 a.m. - 7 p.m.
Wednesday	9 a.m. - 7 p.m.
Thursday	9 a.m. - 7 p.m.
Friday	9 a.m. - 5 p.m.
Saturday	9 a.m. - 4 p.m.
Sunday	CLOSED



Bittersweet Branch

602 Bittersweet Road
Mishawaka, IN 46544
(574) 259-5277

Circulation Desk ext. 2200
Reference Services ext. 2300
Youth Services ext. 2400

Monday	10 a.m. - 7 p.m.
Tuesday	10 a.m. - 7 p.m.
Wednesday	10 a.m. - 7 p.m.
Thursday	10 a.m. - 7 p.m.
Friday	10 a.m. - 4 p.m.
Saturday	10 a.m. - 4 p.m.
Sunday	CLOSED



Harris Branch

51446 Elm Road
Granger, IN 46530
(574) 259-5277

Circulation Desk ext. 3200
Reference Services ext. 3300
Youth Services ext. 3400

Monday	10 a.m. - 7 p.m.
Tuesday	10 a.m. - 7 p.m.
Wednesday	10 a.m. - 7 p.m.
Thursday	10 a.m. - 7 p.m.
Friday	10 a.m. - 4 p.m.
Saturday	10 a.m. - 4 p.m.
Sunday	CLOSED

Mark Your Calendar

Monday, Feb. 16

CLOSED for Presidents Day

Wednesday, Feb. 25

CLOSED for Staff In-Service

Board Meetings

3rd Thursday of each month

4 p.m. at Mishawaka Library

Social Media



Follow Us

@MPHPL



Subscribe

@MPHPL



Follow Us

Mishawaka-Penn-Harris Public Library



Register for programs at
mphpl.librarycalendar.com

Photo/Video Policy

We often take photographs and video at library events to use in our publications, on our website, social media and/or video sharing platforms.

You will have the option to opt out before or during the event.

